

FORM No. 1.

River Courses.

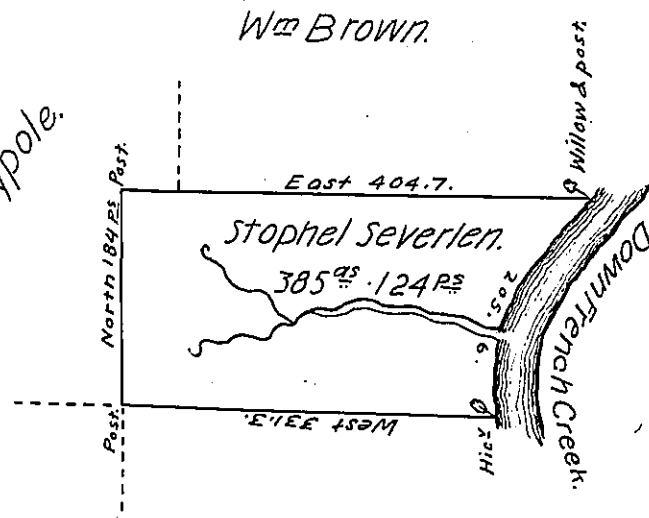
S. 32 1/2 W. 134.6.

S. 2° E. 29

S. 3 W. 42.

205.6 P<sup>3</sup>

DAVID - laypole.



Situate on the West Side of French Creek, in Allegheny County, Containing 385° 124 P<sup>3</sup> and allowance of Six p<sup>t</sup> Cent for Roads &c. Surveyed the 10<sup>th</sup> Day of October, 1794. In pursuance of his improvement, Dated the 10<sup>th</sup> day of April, 1793.

Wm Power, D.S.<sup>r</sup>

To Dan<sup>l</sup> Brodhead, Esquire,  
Surveyor General. }

IN TESTIMONY that the above is a copy of the original remaining on file in the Department of Internal Affairs of Pennsylvania, made conformably to an Act of Assembly approved the 16th day of February, 1833, I have hereunto set my Hand and caused the Seal of said Department to be affixed at Harrisburg, this ninth day of September, 1906.

*Lauchlin Curran*  
Secretary of Internal Affairs.